

REQUIRED

- 76-3/4" steel bars x 21'-0" long (upset one end)
- 76-3/4" steel bars x 11'-0" long
- 102 standard nuts for 3/4" bar
- 6 x 1" anchor plates - B-4 7/8" - B-6 0 1/4" - 4-7/8"
- 76 cast steel turnbuckles std for 3/4" screw
- 76 cast steel sleeves
- 76 cast steel sockets

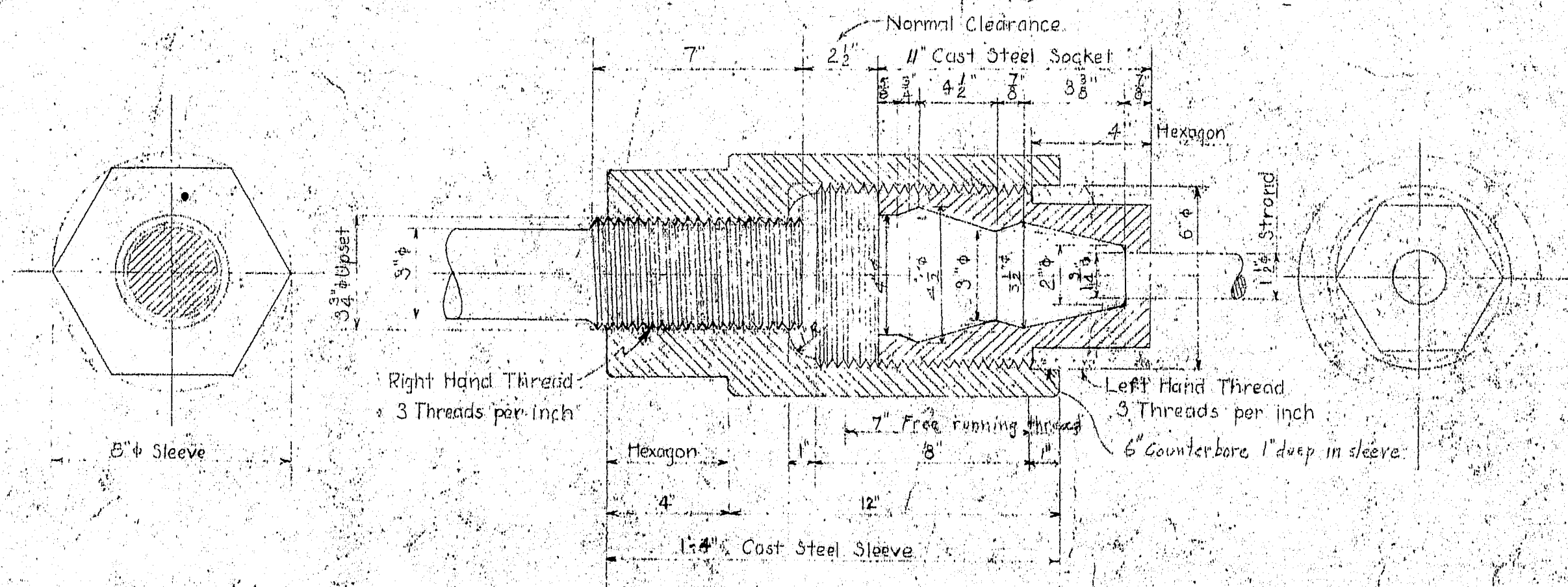
Carbon Steel
Cast Steel
Annealed

Note:
3/4" steel bars with plates, nuts and turnbuckles to be furnished by superstructure contractor and placed by substructure contractor.

Estimate:
Weight of 3/4" bars, nuts and turnbuckles - 63,500 *
Estimated weight of cast steel sockets, sleeves and turnbuckles - 16,150 *

The substructure contractor shall furnish and place structural steel supports to hold anchor chain in position while pouring concrete.

Note:
ON THIS STRAND ASSEMBLY, PATENT PENDING BY MALTON D. ROBINSON.



DETAIL OF STRAND SOCKET AND SLEEVE

Scale 3"=1'-0"

REVISIONS
1-7-30 - Change anchor plates to bars, change thread, add fill-in strand anchor sleeve. Add dimensions at face of nut.
7-26-30 - Revised as built.

**SUPERSTRUCTURE
SUBSTRUCTURE**
P.W.A. PROJECT NO. ME 1010-D
DEER ISLE SEDGWICK BRIDGE DISTRICT
BRIDGE OVER EGGEMOGGIN REACH
FROM LITTLE DEER ISLE TO SEDGWICK
HANGLOCK COUNTY, MAINE

ANCHORAGE STEEL

ROBINSON AND STEINMAN
ENGINEERS
NEW YORK CITY

SCALE AS NOTED
DRAWING NO. RS 330-530
DATE 1-7-30

